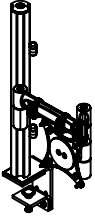
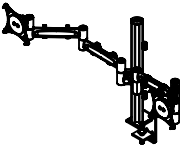
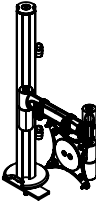
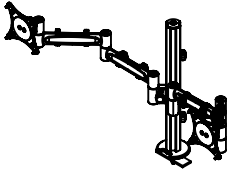
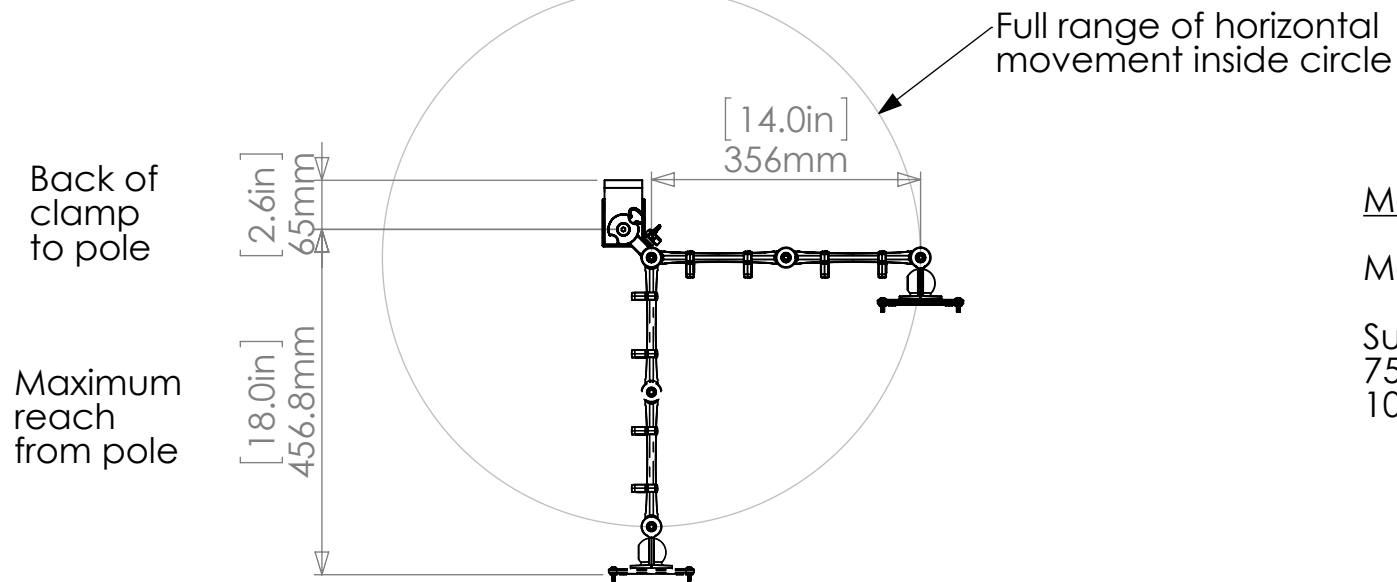


	MA4-4S2D	MA4-4D2D	MA4-4S2KG	MA4-4D2KG
				
Single 2-Limb Arm	X		X	
Dual 2-Limb Arms		X		X
Split Clamp	X	X		
Grommet Clamp			X	X
400mm Apollo4 Pole	X	X	X	X
Height Adjustment from pole	350mm (13.8in)	350mm (13.8in)	350mm (13.8in)	350mm (13.8in)
Maximum Screen Weight per Arm	12kg (26.4lbs)	12kg (26.4lbs)	12kg (26.4lbs)	12kg (26.4lbs)
Knuckle Rotation	360°*	360°*	360°*	360°*
Wedge Rotation	360°*	360°*	360°*	360°*
VESA rotation (Portrait and Landscape)	360°	360°	360°	360°
Knuckle Tilt Forwards	35°	35°	35°	35°
Knuckle Tilt Backwards	115°	115°	115°	115°

* Does not include possible interference with other parts of the assembly

INTEG

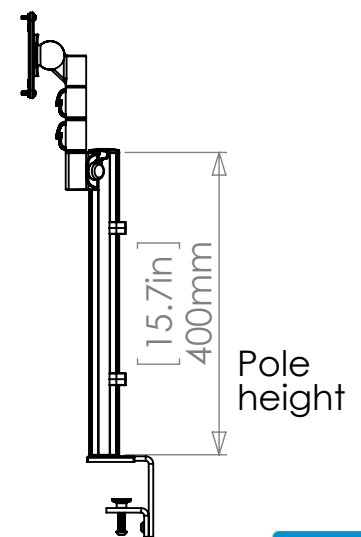
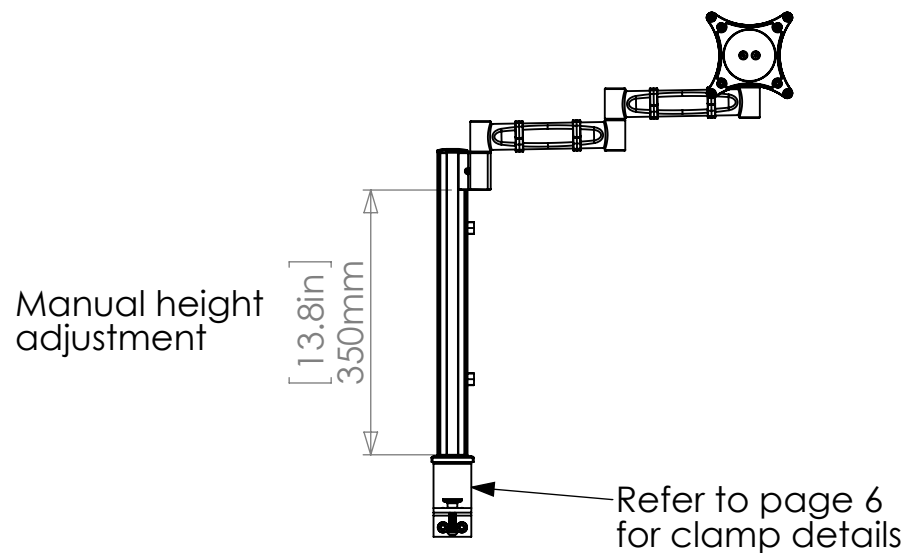
PROPRIETARY AND CONFIDENTIAL THE INFORMATION CONTAINED IN THIS DRAWING IS THE SOLE PROPERTY OF MODTEC. ANY REPRODUCTION IN PART OR AS A WHOLE WITHOUT THE WRITTEN PERMISSION OF MODTEC IS PROHIBITED.	TOLERANCES ALL TOLERANCES UNLESS OTHERWISE SPECIFIED: X.XX ± 0.05 X.X ± 0.1 X ± 0.5	REVISIONS:				COMMENTS:	NAME DATE	MODTEC INDUSTRIES LTD
							DRAWN MG	
							CHECKED 	
							APPROVED 	
							MATERIAL:	
 THIRD ANGLE PROJECTION		1 0	27/04/2016 28/05/2014	MG MG	Corrected forward tilt on table First Issue	DIMENSIONS ARE IN MM DO NOT SCALE DRAWING	FINISH:	DESCRIPTION: Specification Sheet - Mercury Assemblies PART NUMBER: SAM1112 REVISION: 1
		REV	DATE	DRAWN	REASON		WEIGHT:	SCALE: 1:10 SHEET 1 OF 7
								FILE NAME: SAM1112 Rev1 Specification Sheet - Mercury Assemblies



Monitor requirements

Maximum weight = 12kg (26.4lbs)

Suitable VESA hole patterns:
75 x 75
100 x 100



INTEG

PROPRIETARY AND CONFIDENTIAL
THE INFORMATION CONTAINED IN THIS DRAWING IS THE SOLE PROPERTY OF MODTEC. ANY REPRODUCTION IN PART OR AS A WHOLE WITHOUT THE WRITTEN PERMISSION OF MODTEC IS PROHIBITED.

TOLERANCES
ALL TOLERANCES UNLESS OTHERWISE SPECIFIED:

X.XX ± 0.05
X.X ± 0.1
X ± 0.5



THIRD ANGLE PROJECTION

REVISIONS:

REV	DATE	DRAWN	REASON
0	28/05/2014	MG	First Issue

COMMENTS:

MA4-4S2D

DIMENSIONS ARE IN MM DO NOT SCALE DRAWING

	NAME	DATE
DRAWN	MG	5/05/2016
CHECKED		
APPROVED		
MATERIAL:		
FINISH:		
WEIGHT:		

MODTEC INDUSTRIES LTD

DESCRIPTION: Specification Sheet - Mercury Assemblies

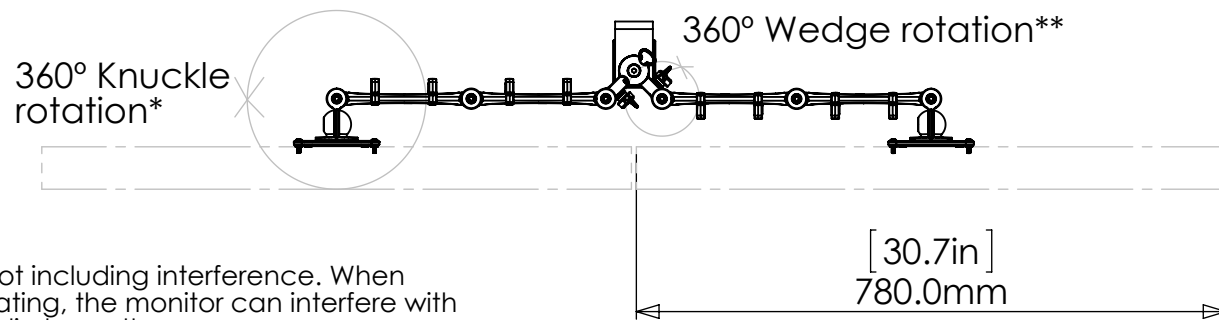
PART NUMBER:

REVISION:

SCALE: 1:10

FILE NAME: SAM1112 Rev1 Specification Sheet - Mercury Assemblies

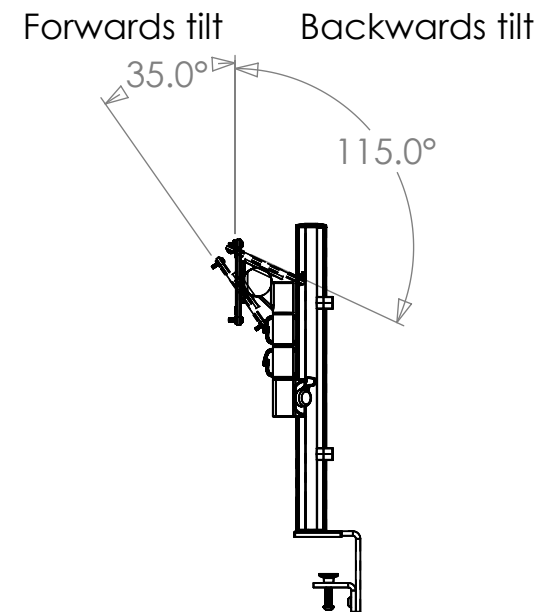
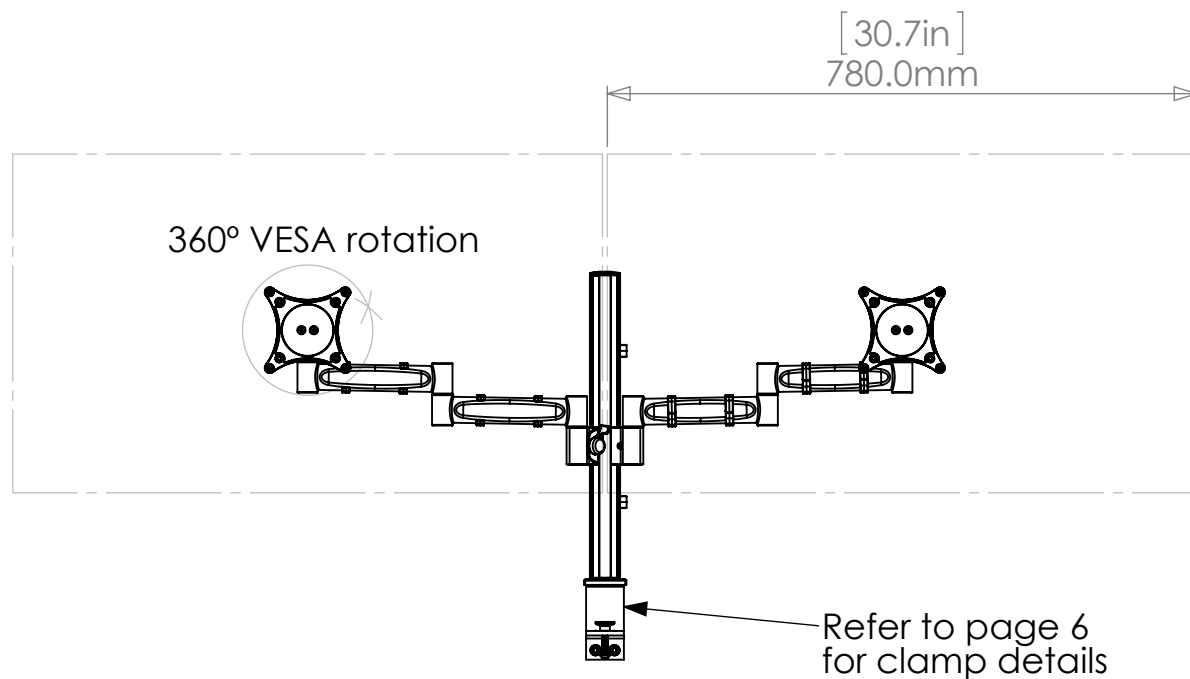
SHEET 2 OF 7



* Not including interference. When rotating, the monitor can interfere with the limbs on the arm.

** Not including interference. When rotating, the arm can interfere with the pole.

Maximum screen width
when using dual screens



INTEG

PROPRIETARY AND CONFIDENTIAL
THE INFORMATION CONTAINED IN THIS DRAWING IS THE SOLE PROPERTY OF MODTEC. ANY REPRODUCTION IN PART OR AS A WHOLE WITHOUT THE WRITTEN PERMISSION OF MODTEC IS PROHIBITED.

TOLERANCES
ALL TOLERANCES UNLESS OTHERWISE SPECIFIED:

X.XX ± 0.05
X.X ± 0.1
X ± 0.5



REVISIONS:

REV	DATE	DRAWN	REASON
0	28/05/2014	MG	First Issue

COMMENTS:

MA4-4D2D

DIMENSIONS ARE IN MM DO NOT SCALE DRAWING

	NAME	DATE
DRAWN	MG	5/05/2016
CHECKED		
APPROVED		
MATERIAL:		
FINISH:		
WEIGHT:		

MODTEC INDUSTRIES LTD

DESCRIPTION: Specification Sheet - Mercury Assemblies

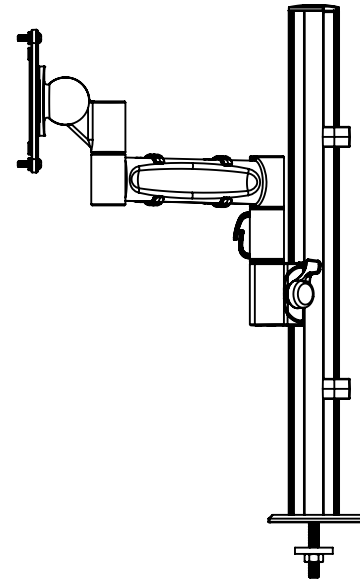
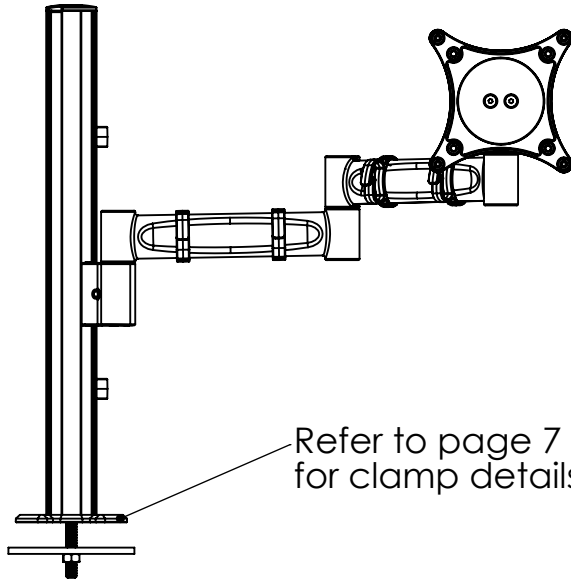
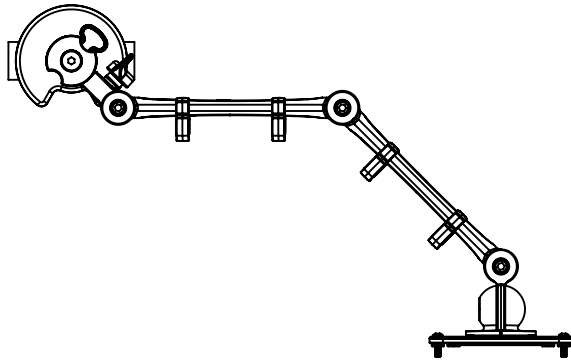
PART NUMBER:

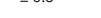
REVISION:

SCALE: 1:10

FILE NAME: SAM1112 Rev1 Specification Sheet - Mercury Assemblies

SHEET 3 OF 7



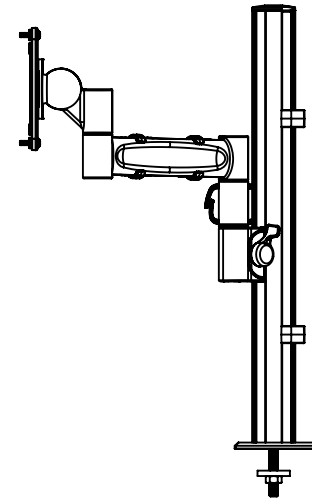
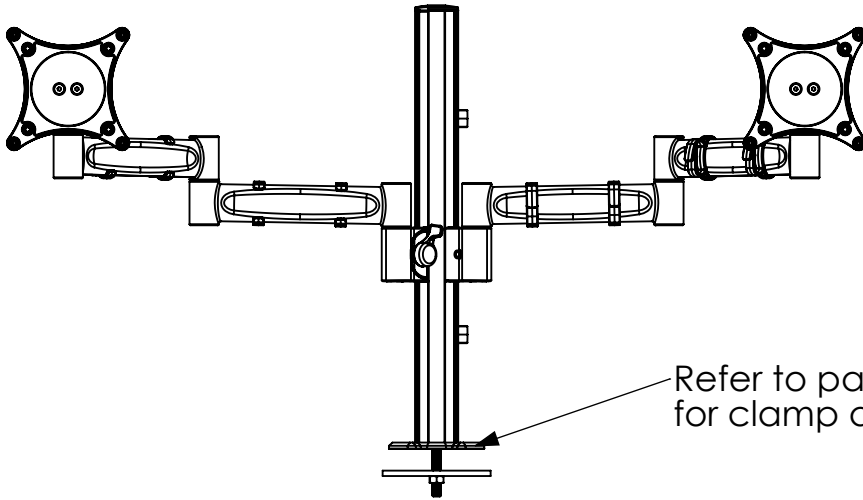
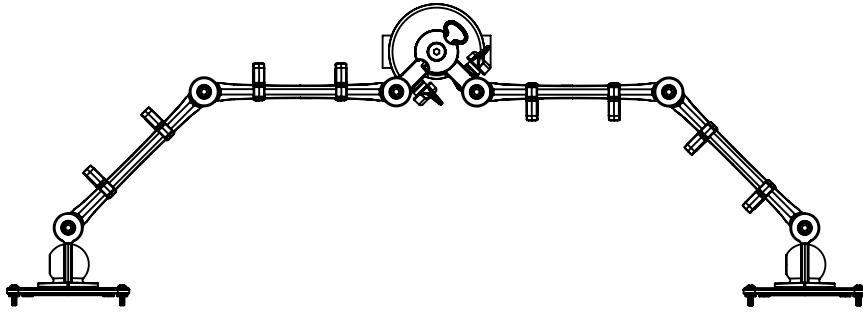
PROPRIETARY AND CONFIDENTIAL THE INFORMATION CONTAINED IN THIS DRAWING IS THE SOLE PROPERTY OF MODTEC. ANY REPRODUCTION IN PART OR AS A WHOLE WITHOUT THE WRITTEN PERMISSION OF MODTEC IS PROHIBITED.	TOLERANCES ALL TOLERANCES UNLESS OTHERWISE SPECIFIED: X.XX ± 0.05 X.X ± 0.1 X ± 0.5	REVISIONS:				COMMENTS: MA4-4S2KG		<table><tr><td></td><td>NAME</td><td>DATE</td></tr><tr><td>DRAWN</td><td>MG</td><td>5/05/2016</td></tr><tr><td>CHECKED</td><td></td><td></td></tr><tr><td>APPROVED</td><td></td><td></td></tr><tr><td colspan="3">MATERIAL:</td></tr><tr><td colspan="3">FINISH:</td></tr><tr><td colspan="3">WEIGHT:</td></tr></table>		NAME	DATE	DRAWN	MG	5/05/2016	CHECKED			APPROVED			MATERIAL:			FINISH:			WEIGHT:			MODTEC INDUSTRIES LTD	
		NAME	DATE																												
	DRAWN	MG	5/05/2016																												
	CHECKED																														
	APPROVED																														
	MATERIAL:																														
	FINISH:																														
WEIGHT:																															
	0	28/05/2014	MG	First Issue	DIMENSIONS ARE IN MM		DO NOT SCALE DRAWING	DESCRIPTION: Specification Sheet - Mercury Assemblies																							
THIRD ANGLE PROJECTION	REV	DATE	DRAWN	REASON				PART NUMBER:																							
								REVISION:																							
								SCALE: 1:6																							
								SHEET 4 OF 7																							
								FILE NAME: SAM1112 Rev1 Specification Sheet - Mercury Assemblies																							



DIMENSIONS ARE IN MM DO NOT SCALE DRAWING

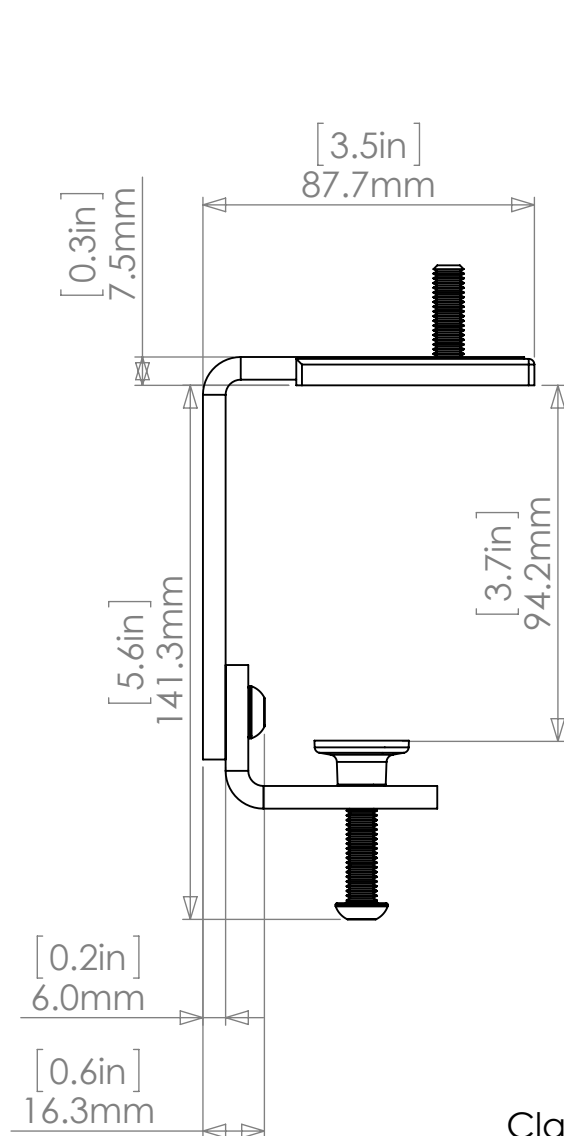
FILE NAME: SAM1112 Rev1 Specification Sheet - Mercury Assemblies

SHEET 4 OF 7

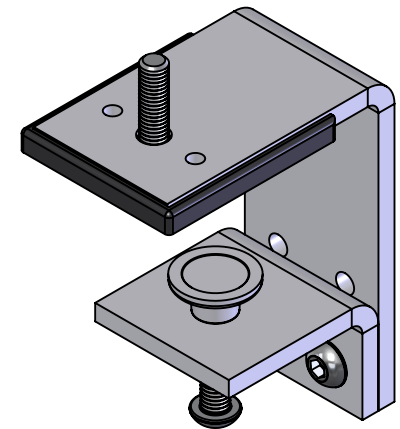
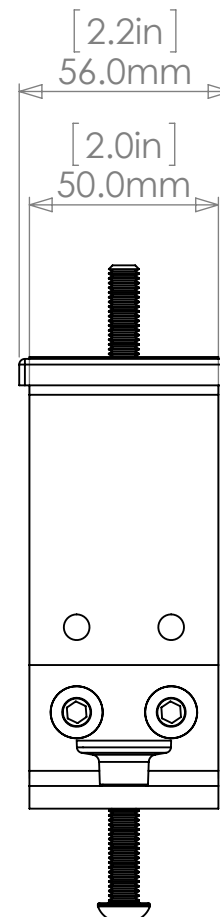


<div>PROPRIETARY AND CONFIDENTIAL</div> <div>THE INFORMATION CONTAINED IN THIS DRAWING IS THE SOLE PROPERTY OF MODTEC. ANY REPRODUCTION IN PART OR AS A WHOLE WITHOUT THE WRITTEN PERMISSION OF MODTEC IS PROHIBITED.</div>	<div>TOLERANCES</div> <div>ALL TOLERANCES UNLESS OTHERWISE SPECIFIED:</div> <div>X.XX ± 0.05</div> <div>X.X ± 0.1</div> <div>X ± 0.5</div>	<div>REVISIONS:</div>				<div>COMMENTS:</div> <div>MA4-4D2KG</div>		<div></div>	<div>NAME</div>	<div>DATE</div>	<div>MODTEC INDUSTRIES LTD</div> <div>DESCRIPTION: Specification Sheet - Mercury Assemblies</div> <div>PART NUMBER:</div> <div>REVISION:</div> <div>SCALE: 1:7</div> <div>FILE NAME: SAM1112 Rev1 Specification Sheet - Mercury Assemblies</div> <div>SHEET 5 OF 7</div>
		<div>0</div>	<div>28/05/2014</div>	<div>MG</div>	<div>First Issue</div>	<div></div>	<div></div>	<div>DRAWN</div>	<div>MG</div>	<div>5/05/2016</div>	
		<div></div>	<div></div>	<div></div>	<div></div>	<div></div>	<div></div>	<div>CHECKED</div>	<div></div>	<div></div>	
		<div></div>	<div></div>	<div></div>	<div></div>	<div></div>	<div></div>	<div>APPROVED</div>	<div></div>	<div></div>	
		<div></div>	<div></div>	<div></div>	<div></div>	<div></div>	<div></div>	<div>MATERIAL:</div>		<div></div>	
	<div></div>	<div></div>	<div></div>	<div></div>	<div></div>	<div></div>	<div>FINISH:</div>		<div></div>		
<div></div> <div>THIRD ANGLE PROJECTION</div>	<div>REV</div>	<div>DATE</div>	<div>DRAWN</div>	<div>REASON</div>	<div>DIMENSIONS ARE IN MM</div>	<div>DO NOT SCALE DRAWING</div>	<div>WEIGHT:</div>				





Max Limit
(No Min Limit)



Clamp designed to go
around the edge of desks



PROPRIETARY AND CONFIDENTIAL
THE INFORMATION CONTAINED IN THIS DRAWING IS THE SOLE PROPERTY OF MODTEC. ANY REPRODUCTION IN PART OR AS A WHOLE WITHOUT THE WRITTEN PERMISSION OF MODTEC IS PROHIBITED.

TOLERANCES
ALL TOLERANCES UNLESS OTHERWISE SPECIFIED:

X.XX ± 0.05
X.X ± 0.1
X ± 0.5



THIRD ANGLE PROJECTION

REVISIONS:

REV	DATE	DRAWN	REASON
0	28/05/2014	MG	First Issue

COMMENTS:

PCPD9-SA2-02

DIMENSIONS ARE IN MM DO NOT SCALE DRAWING

	NAME	DATE
DRAWN	MG	5/05/2016
CHECKED		
APPROVED		
MATERIAL:		
FINISH:		
WEIGHT:		

MODTEC INDUSTRIES LTD

DESCRIPTION: Integ Slimline Splitclamp with Locking Holes

PART NUMBER:

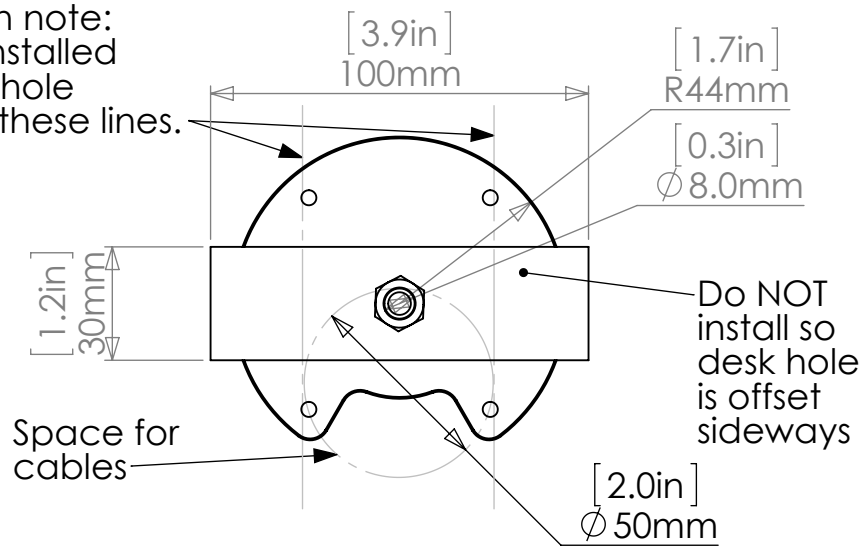
REVISION:

SCALE: 1:10

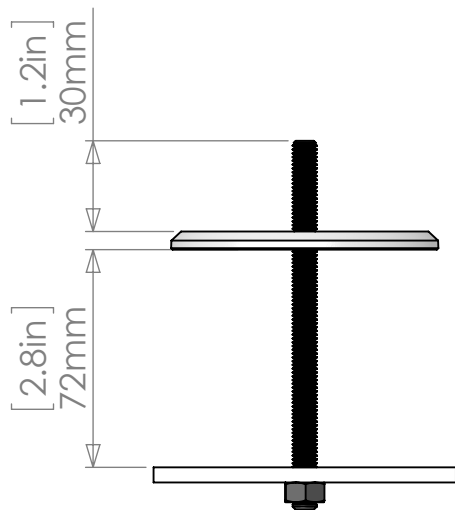
SHEET 6 OF 7

FILE NAME: SAM1112 Rev1 Specification Sheet - Mercury Assemblies

Note: The cable cutout on the clamp should be facing the back of the desk. The full round of the clamp should be facing the user.

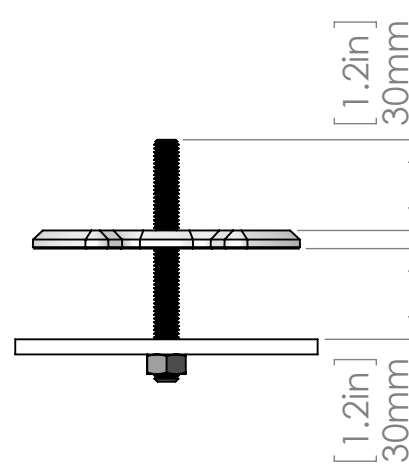


Desk hole size
8.5mm (0.3in) Minimum
50mm (2.0in) Maximum



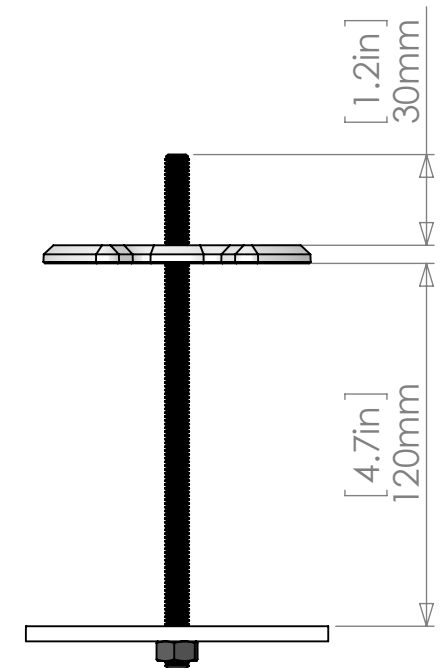
PCPG2-SW0-00 (Option)

Max desk thickness = 72mm
(2.8in)



PCPG2-SW0-01 (Standard)

Max desk thickness = 30mm (1.2in)



PCPG2-SW0-02 (Option)

Max desk thickness = 120mm
(4.7in)

PROPRIETARY AND CONFIDENTIAL THE INFORMATION CONTAINED IN THIS DRAWING IS THE SOLE PROPERTY OF MODTEC. ANY REPRODUCTION IN PART OR AS A WHOLE WITHOUT THE WRITTEN PERMISSION OF MODTEC IS PROHIBITED.	TOLERANCES ALL TOLERANCES UNLESS OTHERWISE SPECIFIED: X.XX ± 0.05 X.X ± 0.1 X ± 0.5	REVISIONS:				COMMENTS: Kidney Grommet Clamp			NAME	DATE	MODTEC INDUSTRIES LTD DESCRIPTION: Kidney Grommet Apollo 4 Pole PART NUMBER: REVISION: SCALE: 1:2.5 <small>FILE NAME: SAM1112 Rev1 Specification Sheet - Mercury Assemblies</small>
								DRAWN	MG	5/05/2016	
						CHECKED					
						APPROVED					
						MATERIAL:					
						FINISH:					
				DIMENSIONS ARE IN MM DO NOT SCALE DRAWING			WEIGHT:			SHEET 7 OF 7	