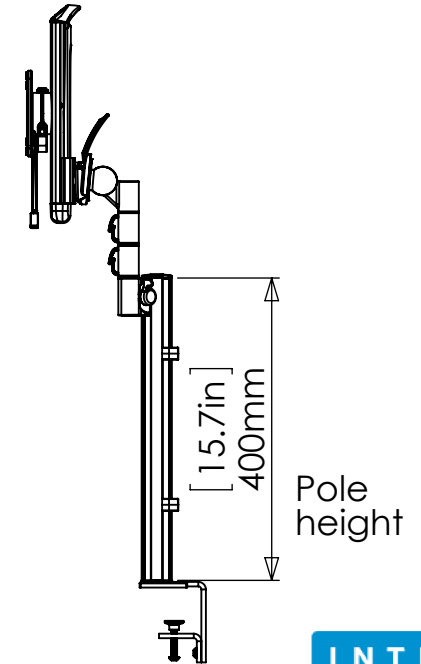


Monitor requirements

Suitable weight:
Minimum weight = 2.5kg (5.5lbs)
Maximum weight = 6kg (13.2lbs)

Suitable VESA hole patterns:
75 x 75
100 x 100



INTEG

PROPRIETARY AND CONFIDENTIAL
THE INFORMATION CONTAINED IN THIS DRAWING IS THE SOLE PROPERTY OF MODTEC. ANY REPRODUCTION IN PART OR AS A WHOLE WITHOUT THE WRITTEN PERMISSION OF MODTEC IS PROHIBITED.

TOLERANCES
ALL TOLERANCES UNLESS OTHERWISE SPECIFIED:

X.XX ± 0.05
X.X ± 0.1
X ± 0.5



REVISIONS:

REV	DATE	DRAWN	REASON
A	17/03/2014	MG	First Issue

COMMENTS:

BQA4-4S2D

DIMENSIONS ARE IN MM DO NOT SCALE DRAWING

	NAME	DATE
DRAWN	MG	29/11/2019
CHECKED		
APPROVED		
MATERIAL:		
FINISH:		
WEIGHT:		

MODTEC INDUSTRIES LTD

DESCRIPTION: Blade Assemblies Specification sheet

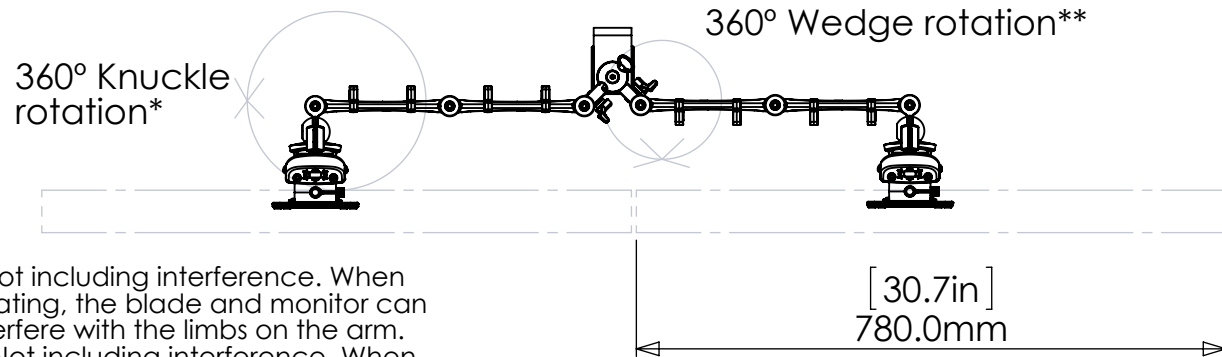
DEV NUMBER:

REVISION:

SCALE: 1:10

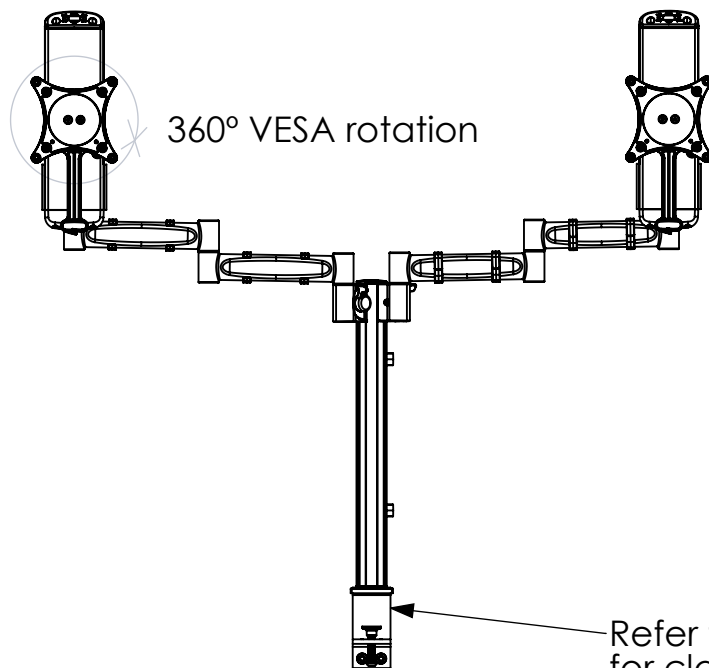
FILE NAME: SAM1286 Rev0 Blade Specification Sheet

SHEET 2 OF 7

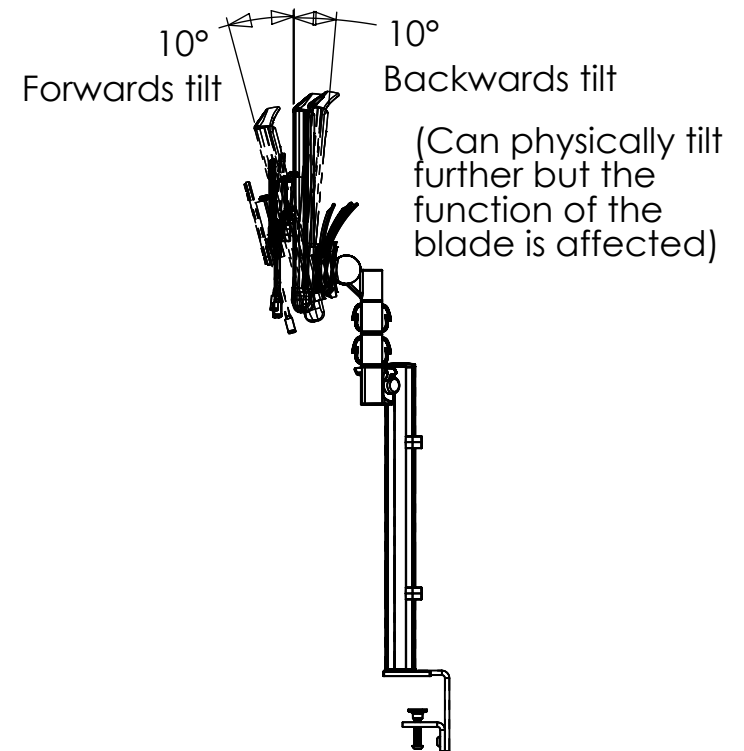


* Not including interference. When rotating, the blade and monitor can interfere with the limbs on the arm.
 ** Not including interference. When rotating, the arm can interfere with the pole.

Maximum screen width
when using dual screens



Refer to page 6
for clamp details



PROPRIETARY AND CONFIDENTIAL
 THE INFORMATION CONTAINED IN THIS DRAWING IS THE SOLE PROPERTY OF MODTEC. ANY REPRODUCTION IN PART OR AS A WHOLE WITHOUT THE WRITTEN PERMISSION OF MODTEC IS PROHIBITED.

TOLERANCES
 ALL TOLERANCES UNLESS OTHERWISE SPECIFIED:
 X.XX ± 0.05
 X.X ± 0.1
 X ± 0.5



REVISIONS:			
REV	DATE	DRAWN	REASON
A	17/03/2014	MG	First Issue

COMMENTS:
 BQA4-4D2D

DIMENSIONS ARE IN MM DO NOT SCALE DRAWING

	NAME	DATE
DRAWN	MG	29/11/2019
CHECKED		
APPROVED		
MATERIAL:		
FINISH:		
WEIGHT:		

MODTEC INDUSTRIES LTD

DESCRIPTION: Blade Assemblies Specification sheet

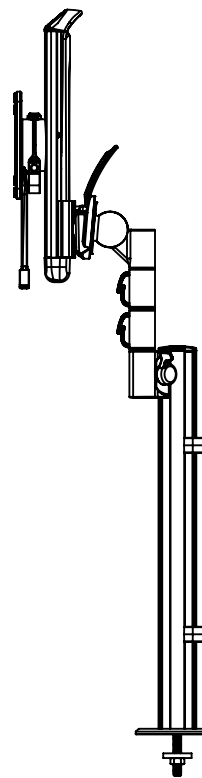
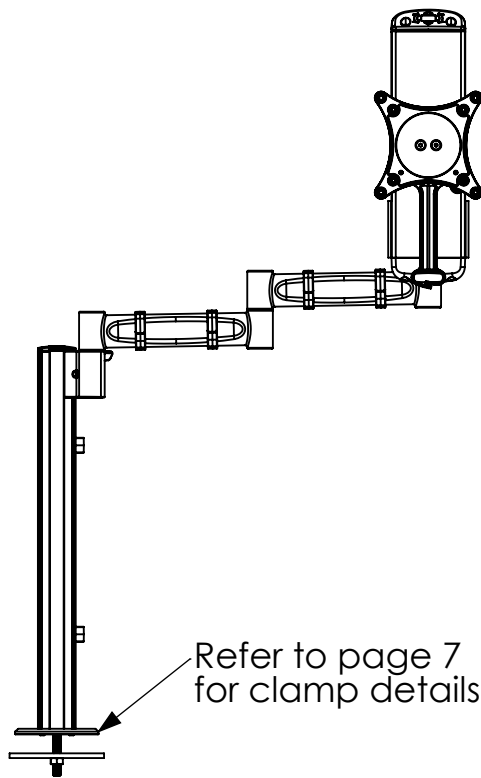
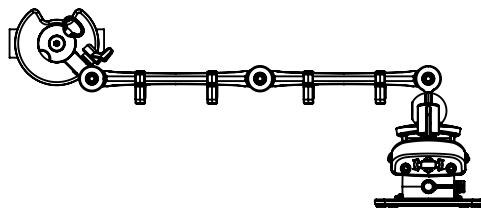
DEV NUMBER:

REVISION:

SCALE: 1:10

FILE NAME: SAM1286 Rev0 Blade Specification Sheet

SHEET 3 OF 7



PROPRIETARY AND CONFIDENTIAL
THE INFORMATION CONTAINED IN THIS DRAWING IS THE SOLE PROPERTY OF MODTEC. ANY REPRODUCTION IN PART OR AS A WHOLE WITHOUT THE WRITTEN PERMISSION OF MODTEC IS PROHIBITED.

TOLERANCES
ALL TOLERANCES UNLESS OTHERWISE SPECIFIED:
X.XX ± 0.05
X.X ± 0.1
X ± 0.5



REVISIONS:			
REV	DATE	DRAWN	REASON
A	17/03/2014	MG	First Issue

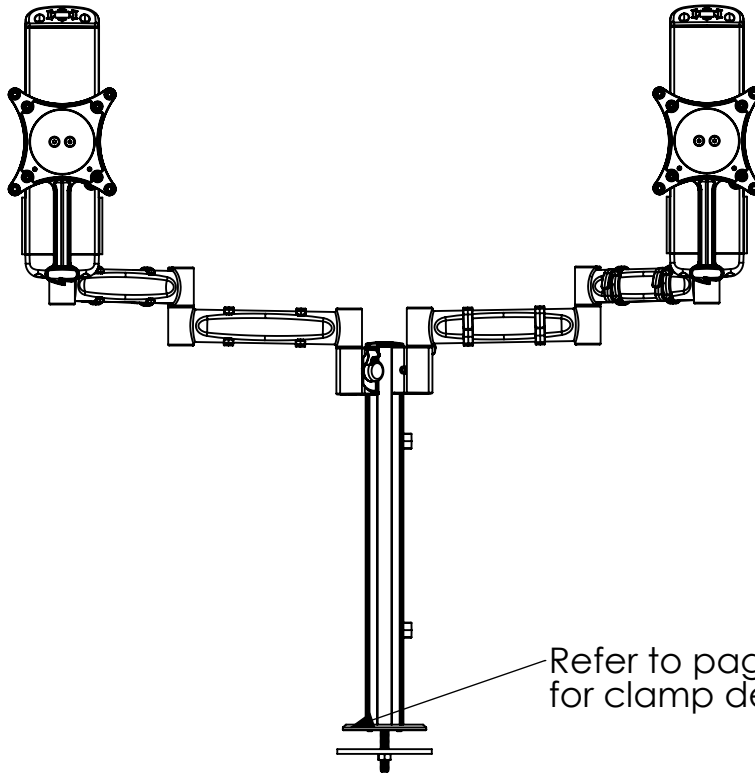
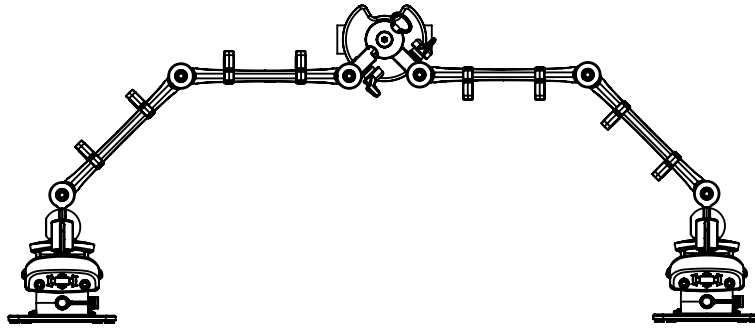
COMMENTS:
BQA4-4S2KG

DIMENSIONS ARE IN MM DO NOT SCALE DRAWING

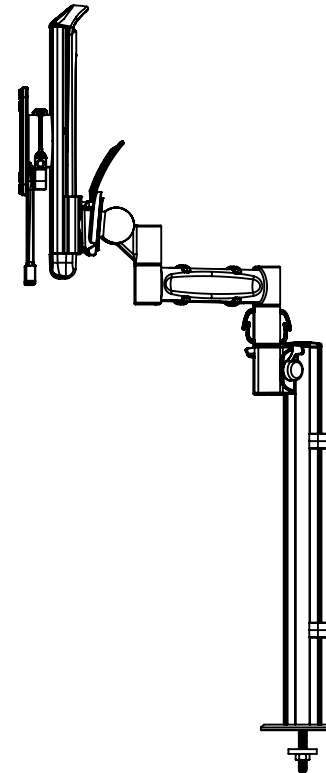
	NAME	DATE
DRAWN	MG	29/11/2019
CHECKED		
APPROVED		
MATERIAL:		
FINISH:		
WEIGHT:		

MODTEC INDUSTRIES LTD
DESCRIPTION: Blade Assemblies Specification sheet
DEV NUMBER:
REVISION:
SCALE: 1:8
SHEET 4 OF 7

FILE NAME: SAM1286 Rev0 Blade Specification Sheet



Refer to page 7
for clamp details



PROPRIETARY AND CONFIDENTIAL
THE INFORMATION CONTAINED IN THIS DRAWING IS THE SOLE PROPERTY OF MODTEC. ANY REPRODUCTION IN PART OR AS A WHOLE WITHOUT THE WRITTEN PERMISSION OF MODTEC IS PROHIBITED.

TOLERANCES
ALL TOLERANCES UNLESS OTHERWISE SPECIFIED:
X.XX ± 0.05
X.X ± 0.1
X ± 0.5



THIRD ANGLE PROJECTION

REVISIONS:

REV	DATE	DRAWN	REASON
A	17/03/2014	MG	First Issue

COMMENTS:

BQA4-4D2KG

DIMENSIONS ARE IN MM DO NOT SCALE DRAWING

	NAME	DATE
DRAWN	MG	29/11/2019
CHECKED		
APPROVED		
MATERIAL:		
FINISH:		
WEIGHT:		

MODTEC INDUSTRIES LTD

DESCRIPTION: Blade Assemblies Specification sheet

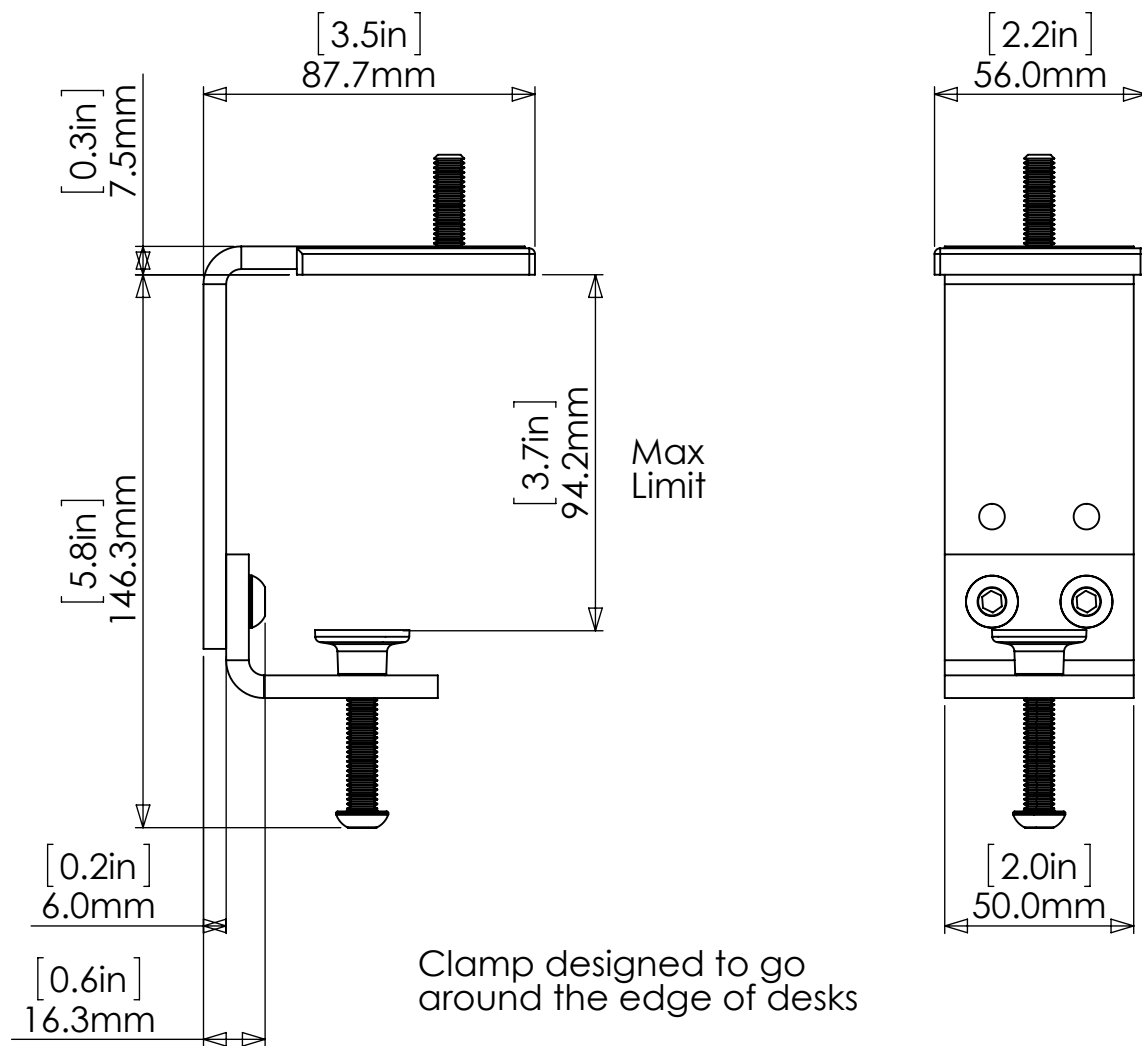
DEV NUMBER:

REVISION:

SCALE: 1:8

FILE NAME: SAM1286 Rev0 Blade Specification Sheet

SHEET 5 OF 7



Clamp designed to go around the edge of desks



PROPRIETARY AND CONFIDENTIAL
THE INFORMATION CONTAINED IN THIS DRAWING IS THE SOLE PROPERTY OF MODTEC. ANY REPRODUCTION IN PART OR AS A WHOLE WITHOUT THE WRITTEN PERMISSION OF MODTEC IS PROHIBITED.

TOLERANCES
ALL TOLERANCES UNLESS OTHERWISE SPECIFIED:
X.XX ± 0.05
X.X ± 0.1
X ± 0.5



REVISIONS:			
REV	DATE	DRAWN	REASON
A	17/03/2014	MG	First Issue

COMMENTS:
PCPD9-SA2-00

DIMENSIONS ARE IN MM DO NOT SCALE DRAWING

	NAME	DATE
DRAWN	MG	29/11/2019
CHECKED		
APPROVED		
MATERIAL:		
FINISH:		
WEIGHT:		

MODTEC INDUSTRIES LTD

DESCRIPTION: Blade Assemblies Specification sheet

DEV NUMBER:

REVISION:

SCALE: 1:10

SHEET 6 OF 7

FILE NAME: SAM1286 Rev0 Blade Specification Sheet

Note: The cable cutout on the clamp should be facing the back of the desk. The full round of the clamp should be facing the user.

Do NOT install so desk hole is offset sideways

Installation note: Must be installed with desk hole between these lines.

Space for cables

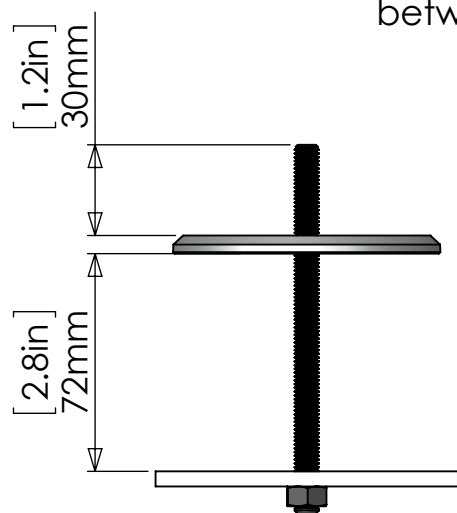
[2.0in]
Ø 50mm

[1.2in]
30mm

[0.3in]
Ø 8.0mm
[1.7in]
R44mm

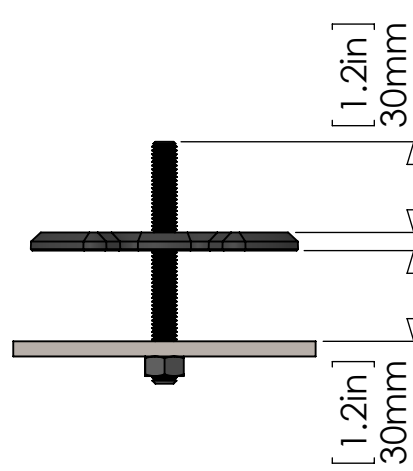
[3.9in]
100mm

Desk hole size
8.5mm (0.3in) Minimum
50mm (2.0in) Maximum



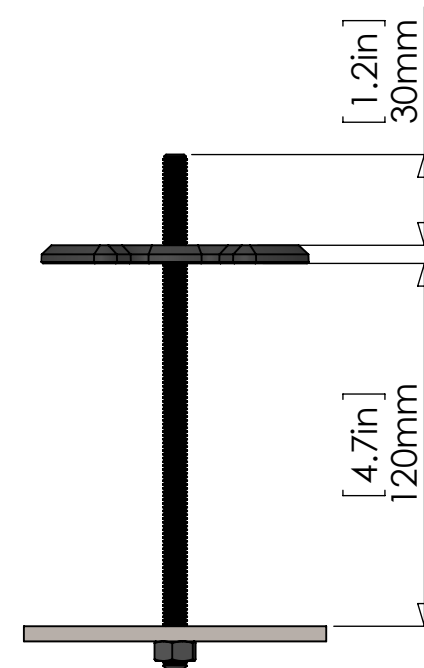
PCPG2-SW0-00 (Option)

Max desk thickness = 72mm (2.8in)



PCPG2-SW0-01 (Standard)

Max desk thickness = 30mm (1.2in)



PCPG2-SW0-02 (Option)

Max desk thickness = 120mm (4.7in)

<div>PROPRIETARY AND CONFIDENTIAL</div> <div>THE INFORMATION CONTAINED IN THIS DRAWING IS THE SOLE PROPERTY OF MODTEC. ANY REPRODUCTION IN PART OR AS A WHOLE WITHOUT THE WRITTEN PERMISSION OF MODTEC IS PROHIBITED.</div>	<div>TOLERANCES</div> <div>ALL TOLERANCES UNLESS OTHERWISE SPECIFIED:</div> <div>X.XX ± 0.05</div> <div>X.X ± 0.1</div> <div>X ± 0.5</div>	REVISIONS:				<div>COMMENTS:</div> <div>Kidney Grommet Clamp</div>			NAME	DATE	<div>MODTEC INDUSTRIES LTD</div>			
								DRAWN	MG	29/11/2019			DESCRIPTION: Blade Assemblies Specification sheet	
								CHECKED					PART NUMBER:	
								APPROVED					REVISION:	
								MATERIAL:						
						FINISH:								
						WEIGHT:			SCALE: 1:2.5					
									FILE NAME: SAM1286 Rev0 Blade Specification Sheet					
									SHEET 7 OF 7					